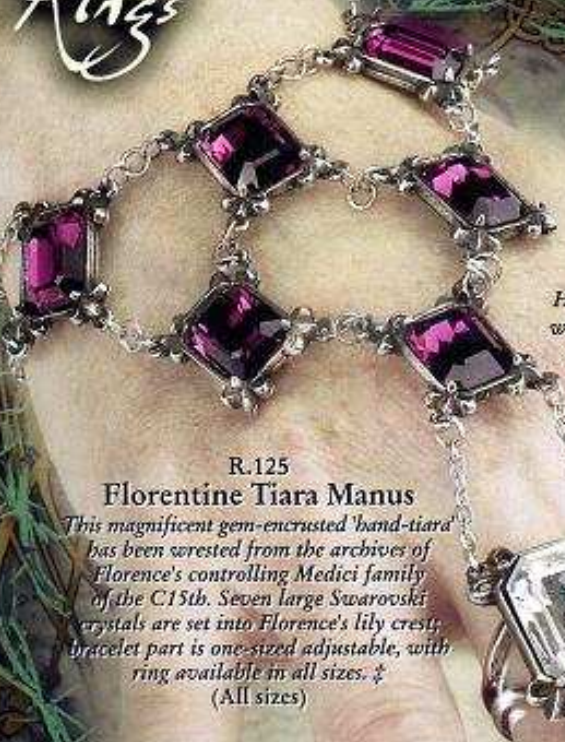


Alchemy Rings are hand cast and made in England from fine English pewter and in many cases, including other high quality materials and finishes.

For more information relating to products, symbols, designs etc, see inside front cover.

Rings



**R.125
Florentine Tiara Manus**

This magnificent gem-encrusted 'band-tiara' has been wrested from the archives of Florence's controlling Medici family of the C15th. Seven large Swarovski crystals are set into Florence's lily crest; bracelet part is one-sized adjustable, with ring available in all sizes. ‡
(All sizes)

**R.119
Carfax**

A gothic seal to the creatures of the night.
(Sizes: N, Q, T, W, Y)



**R.121
Cardinal Syne's
Funerary Band**

From an ecclesiastic grave, a rich papal band of blood red enamel set with crystals. ‡
(All sizes)



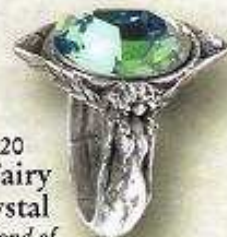
**R.117
Oneiza's Quartz**

Amuletic ring of Thalaba's deceased bride, posthumously released from vampiric & evil possession; Swarovski crystal. ‡
(All sizes)



**R.120
Absinthe Fairy
Spirit Crystal**

An emerald pond of illusion and creation. ‡
(All sizes)



**R.112
Life and Death
Ambigram**



Enamelled band of 'magical, reversible script'.
(All sizes)

**R.116
Euscorpius
Two-tone poison
predator.**
(All sizes)



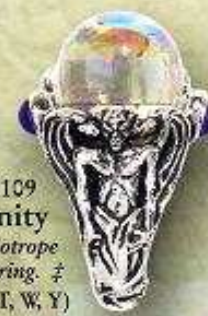
**R.141
Lamelian**

Gothic gem mourning ring. ‡
(All sizes)



**R.109
Divinity**

Angelic belitrope crystal ball ring. ‡
(Sizes: N, Q, T, W, Y)



**R.104
Margravenus**

A clear crystal projecting the vision of a pentagram within and set in a noblesque tracery mount. ‡ (All sizes)



**R.103
Immortal Kist
Poison
Ring**



A blood-red enamelled coffin lid (with magnet catch) is hinged and opens to reveal the vampire's secret compartment within.
(All sizes)

**R.102
Araneae Jetstone**



The giant, venomous spider contrastingly overpowers the large, black, faceted crystal beneath. ‡
(All sizes)

**R.124
Angel's Eye**

His deep, crystal eye is engraved with the pentagram from the seal of the archangel Metatron. ‡
(All sizes)



R.124 The Seal of Metatron, including the pentagram engraved in the back of the crystal eye.

**R.122
Omega Skull**

The Alchemist's skull, wearing his total, all-powerful esoteric knowledge as indelible surface engraving.
(All sizes)



**R.123
Broken
Heart**

Double-sided ring of love, pain and sorrow, featuring an enamelled heart obscuring a deep-set skull.
(All sizes)



‡ Specified crystal colours are subject to availability, and may be substituted.

Rings are approximately actual size.

Alchemy's rings are available in five or six sizes. The sizes stated are intended as a guide only, and are not strictly an accurate indication of measurement.

Diameter Ring Gauge

To gauge your ring size using the circular guide, place a suitably sized existing ring over the size indicators here and choose the closest size to the inner circle.

English:	L	N	Q	T	W	Y
American:	6	7	8 1/2	10	11	12 1/2
European:	12 1/2	15	18 1/2	21	23	27
German:	1.7	1.8	1.9	2.0	2.1	2.2
Japanese:	11	14	17	21	24	27



Diameter Ring Gauge

Linear Ring Gauge

To gauge your ring size using the linear guide, wrap a 5mm wide X 10cm long (approx.) strip of paper around the required finger and mark the point of overlap with a pencil. Then lay flat against this linear guide.



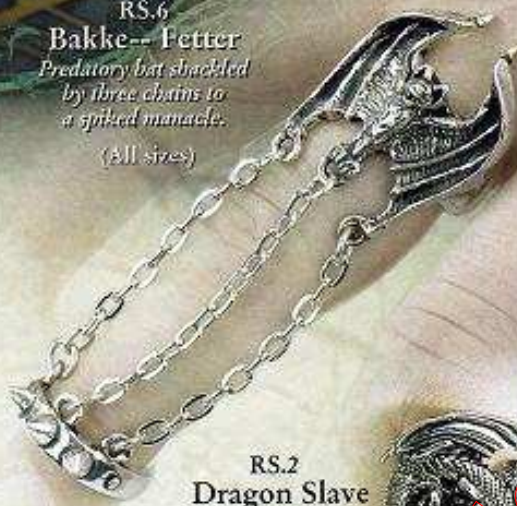
Linear Ring Gauge



RT.2 Diablo Finger Tip Ring
A fiendish face of temptation, talon.
(One size; adjustable)



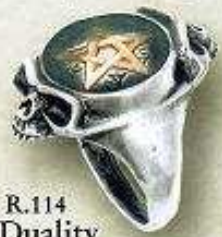
RT.2 Terranima Finger Tip Ring
Human claws become the teeth of a dragon.
(One size; adjustable)



RS.6 Bakke-- Fetter
Predatory bat shackled by three chains to a spiked manacle.
(All sizes)



R.118 Entrapment
The sinister form of a black spider sits upon its silk-like web, ready to pounce. ‡
(Sizes: N, Q, T, W, Y)



R.114 Duality
A Bronze pentagram embedded in the conjoined consciousness of cerebral intimacy.
(Sizes: N, Q, T, W, Y)



RS.2 Dragon Slave Ring
The legendary, all-powerful dragon, ensnares his subserfient captive to eternal entrapment. The master ring is attached by chain to its slave, which is adjustable and fits on the lower joint of the same finger. (All sizes)



R.115 The Bride of Corinth
Goethe's mysterious vampiress, set with a quad of black crystals. ‡ (All sizes)



R.113 Nigrum Serpentis
Ancient guardians against sickness & ill-health, and revered holders of the secret of eternal life; black crystal. ‡
(Sizes: Q, T, W, Y)



R.108 Draco Blackheart
Bold symbol of doom and emotional death, set with large, black Austrian crystal heart. ‡
(Sizes: N, Q, T, W, Y)



R.106 Trefoil Sanguis
All-round enamelled and polished gothic trinity band, in transparent blood red.
(All sizes)



R.105 Shadow of Death
Large, deep burgandy, faceted crystal mounted in a circle of 127-prozen skulls. ‡
(All sizes)



R.99 Chaos Signet
The polished, black-enamelled device of the infamous, maelstromic arrows.
(Sizes: N, Q, T, W, Y)



R.101 Vampyr Skull
The powerful skull of a malevolent predator bites through the finger of its unfortunate wearer.
(Sizes: Q, T, W, Y)



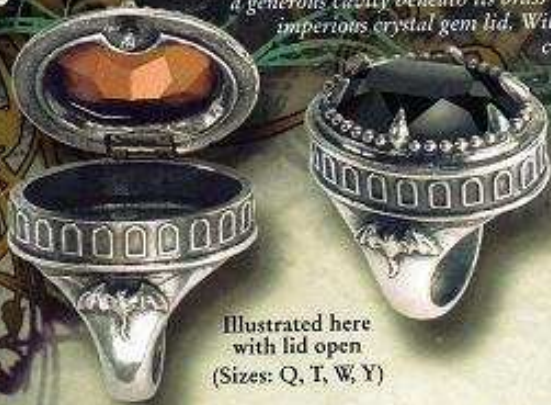
The powerful skull of a malevolent predator bites through the finger of its unfortunate wearer.
(Sizes: Q, T, W, Y)



Rings

R.96a Black Hemlock Poison Ring

Egregious and formidable dress-ring concealing a generous cavity beneath its brass binged, imperious crystal gem lid. With black crystal. ‡



Illustrated here with lid open
(Sizes: Q, T, W, Y)

R.95

Fangorian

A deep-engraved, abstract, tribal-gothic 'batesque' design encircles this pewter band. Pewter ring. (All sizes)



R.86

Draconis Celtica

The head of a dragon lurks beneath this pool of a Celtic spring. (All sizes)



RA.1 Charnalite

The stacked skulls of three hideously deformed mortal creatures.

(One size; adjustable)



R.80 Deadly Friendship



Hands from each side of the threshold grip in certain union; 2 two-tone pewter interlocking rings. (All sizes)

R.79

Fledermaus

A tiny, yet essentially symbolic bat, signifying the spirit of the wearer's soul. (All sizes)



R.70

Wealth Talisman

Beckoning the magian forces with the power to enrich life. A solid bronze pentagram is set in clear enamel, within a ring and interspersed with the five sigils to energise the magic.

(Sizes: N, Q, T, W, Y)



Armour Rings

Three-section articulated pewter rings with custom brass hinges.

R.71 Agla

Five magical talismans of profit and protection. The central Kabbalistic sigillum 'Agla', stands for 'Thou art mighty forever, O Lord', with the remaining four seals of love, memory, safety and peace. ‡

(Sizes: N, Q, T, W, Y)



R.42

Necromancer's Sigil

Encircled by encoded ceremonial rites, the three black haematite cabochons control the powers to arouse the dead; cast pewter ring. ‡

(Sizes: N, Q, T, W, Y)



RA.2 Desmodus

A lamellar sheath of metallic bat-ears.

(One size; adjustable)



R.44

Dr. Von Rosenstein's Induction Principle Ring

In pewter and solid brass, an authentic reproduction of Dr. Von Rosenstein's indispensable key to the induction matrix.

(Sizes: N, Q, T, W, Y)



R.24

Eye of the Devil

Hypnotically sinister blood red crystal eye, staring into the eye of any onlooker. ‡

(Sizes: N, Q, T, W, Y)



RA.4 Black Sunday

A folly of a jewel-encrusted gothic construction; with 10 crystals. ‡

(One size; adjustable)



R.34

Undead Coffin

A funerary purple 'hologram effect' enamel, encapsulating the shrouded living corpse.

(Sizes: N, Q, T, W, Y)



R.30

Soul of Agrippa

After the celebrated Kabbalistic alchemist and magician Cornelius Agrippa, the inset skull appears as a hologram beneath the elemental glaze.

(Sizes: N, Q, T, W, Y)



For more information relating to products, symbols, designs etc, see inside front cover.

R.91 Adder Bite

Gigantic, venomous reptile, spanning two fingers to sink its teeth into the third.
(Sizes: Q, T, W, Y)

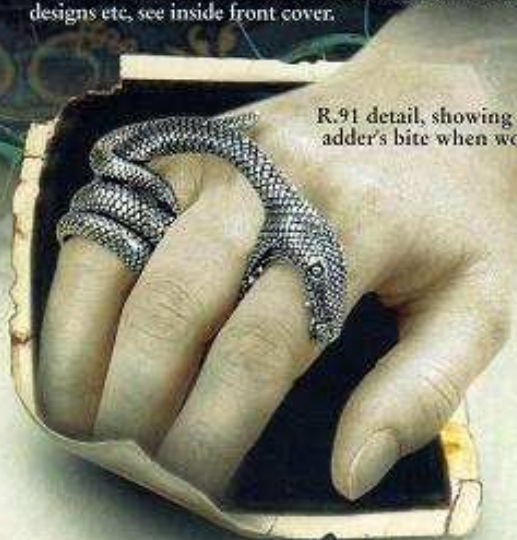
Alchemy's rings are available in five or six sizes. The sizes stated are intended as a guide only, and are not strictly an accurate indication of measurement.

Diameter Ring Gauge

To gauge your ring size using the circular guide, place a suitably sized existing ring over the size indicators here and choose the closest size to the inner circle.

English:	L	N	Q	T	W	Y
American:	6	7	8 1/2	10	11	12 1/2
European:	12 1/2	15	18 1/2	21	23	27
German:	17	18	19	20	21	22
Japanese:	11	14	17	21	24	27

R.91 detail, showing the adder's bite when worn.



R.72 Caput Mortem

Three deaths for the auspicious. Each caput mortem, or death's head, representing one mortal life.
(Sizes: N, Q, T, W, Y)



R.73 Deus Et Natura
The triumphant harmony of Nature and The Creator. The solid bronze Latin band says 'God and Nature do not work together in vain.'
(Sizes: N, Q, T, W, Y)



R.76 Cemetery
A deathly black cabochon, engraved with 'cross fleury', overgrown by graveyard undergrowth and ivy. ‡
(All sizes)

R.78 Pentacle Formé
The powerful cross formé, usurped and empowered by the magic of the pentagram. (All sizes)



R.61 Life Cartouche
Egyptian eternal cross signet; enamelled.
(Sizes: N, Q, T, W, Y)



R.60 Pugin Cross
Multi panelled gothic revival band; enamelled.
(Sizes: N, Q, T, W, Y)



R.30 Celtic Theurgy Ring
Positive supernatural powers of the pentagram under Celtic influence.
(Sizes: N, Q, T, W, Y)



R.45 Bathory Crystal
A sanguine red-faceted crystal mounted in a style befitting the blood thirsty C.16th Countess. ‡
(Sizes: N, Q, T, W, Y)



R.40 The Grim Hood
The folds in the dark garb of the reaper of time, reveal the antique bone-resin skull of fate; ring cast in pewter. (Sizes: N, Q, T, W, Y)



R.38 Soligram
A discreet miniature pentagram noir; with black enamel infill.
(Sizes: N, Q, T, W, Y)



R.36 Great Wish Ring
The Latin inscription 'MEUS OPUS MAGNUS' is the Alchemical spiritual wish for 'The complete fulfilment of life.'
(Sizes: N, Q, T, W, Y)



R.35 Holyblood Runeband
In Runic and Latin, bright means 'the lineage of enlightenment', with ruby red faceted crystal. ‡
(Sizes: N, Q, T, W, Y)



R.23 Roseus Pentagram
A classic black enamelled pentagram, highly polished, and flanked with Alchemical roses of wisdom.
(Sizes: N, Q, T, W, Y)

R.19 Salamander Stone

Fabled alchemical salamanders encircle the blue crystal spirit pool. ‡
(Sizes: N, Q, T, W, Y)



R.16 Demi Alchemist
Classic portrayal of the Alchemist, with black rose.
(Sizes: N, Q, T, W, Y)



R.6 Death Ring
The famous blank, stark expression of the face of death.
(Sizes: N, Q, T, W, Y)



Linear Ring Gauge

To gauge your ring size using the linear guide, wrap a 5mm wide X 10cm long (approx.) strip of paper around the required finger and mark the point of overlap with a pencil. Then lay flat against this linear guide.

Diameter Ring Gauge

Linear Ring Gauge