

**P470 Croix de Lile**

Enamelled and crystal-set cross surmounted by the sacred Lily, symbol of the bloodline of Christ carried by the Merovingian Kings and their descendants. †



**P469 Ankh de Femme**

Combined symbols of eternity and the Sacred Feminine. †



**P468 Crux Gemmata**

Cross with 13 gems, depicting Christ and His Twelve Apostles, and symbol of resurrection and power. †



**P466 The Sacred Heart**

A splendour of crystals and enamel encrust this lustrous icon to the suffering. †



**P467 Opus Dei**

The cult Opus Dei cross and medieval HIS monogram combined against an engraved mirror of Da Vinci's backward text. †



**P465 Gravestone Locket**

Classic Victorian, brass-tinged, ivy-covered and jewelled memorial stone, inscribed "IN AMORTA R.I.P." to secret-away an image of your beloved. †



All pendants are cast and hand-made in fine English pewter, many with additional high quality crystals and other components, hand-plated or other two-tone finishes and all come complete upon their nickel-free chain or other necklace of appropriate length.

**P463 Dead Fairy**

The classic, 1890's silver, Art Nouveau fairy... mortified; with a silver finish.



**P464 Regalia Balkani**

Formal, dark splendour from the coffers of a former Transylvanian noble. †



**P462 Head Rules the Heart**

The last mortal mistake of many a great hero and heroine. †



**P461 Lukadra**

The personal symbol of power of a distant Balkan prince. †



**P459 Alcheffy**

The enamelled and crystal-studded gothic-grotesque tribute to Lalique's Art Nouveau dragonfly; the metamorphosis of The Alchemist. †



**P460 Romanticide Razor**

Symbolising the tragedy and misery of love. †



**P458 St. Sepulchre Cross**

Believed to be a copy of the charmed and unusual, lost pectoral cross belonging to Rector John Rogers, who was burnt at the stake in Smithfield in 1555; with Swarovski crystals and enamel. †



The Alchemist

P454 Adjustable fastening.



### P454 The Hampton Oriel

Inspired by a long lost oriel window prayer box from the magnificent Hampton Court of the Renaissance set with stunning purple velvet enamel and Swarovski crystals and mounted on a black velvet ribbon band. ‡



### P457 Vitruvian Man

Leonardo's famous Canon of Proportions, mirrored, and relating to Agrippa's astrological pentagram and symbol of Venus.



### P453 The Chemical Wedding



The great metaphysical union of opposites; two-tone.

### P450 Masonic Venus

Set with crystals, the astrological and occult signs of Venus, (planetary symbol and pentagram), and the Merovingian Lilies combined, with and their protector's, Masonic rule ‡



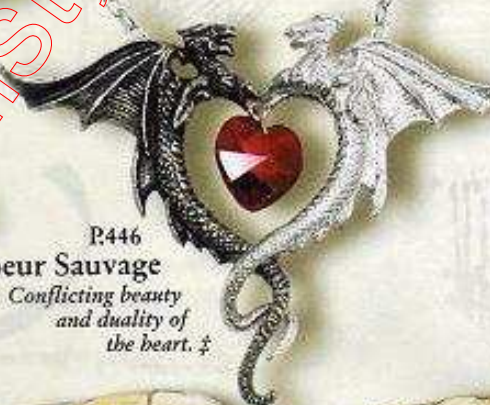
### P447 Blood Moon

A skin of bats flutters about this deep and sinister portent.



### P446 Coeur Sauvage

Conflicting beauty and duality of the heart. ‡



### P452 La Mort de Coeur

Tragic death of the heart. ‡



# Pendants

P456

### Renaissance Cross of Passion

With customary lavish Orthodox flourishing, the deep red crystal Sacred Heart is displayed. ‡



### P455 Hammercross

Bejewelled amulet of a converted, pagan warrior.



### P445 Divinity

The confidential instrument of an inscrutable gothic seer. ‡



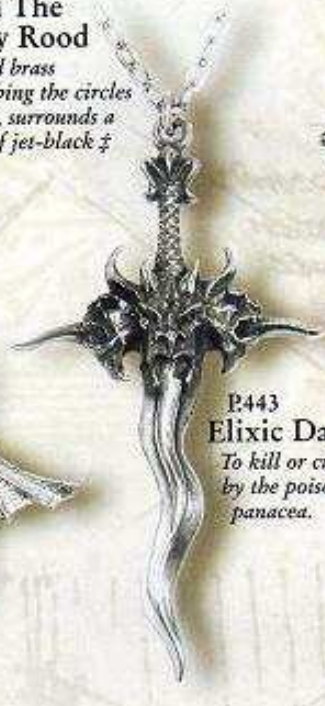
### P451 The Trinity Rood

The embedded brass filigree describing the circles of the Trinity, surrounds a cabochon of jet-black ‡



### P443 Elixir Dagger

To kill or cure by the poisoner's panacea.



P449

### Casanora Choker

Tantalizing, 17th century styled regal constellation of crystals set on a black stretch netting; with black ribbon ties. ‡



P448

### Tzarina Choker

A luxuriant, baroque frame displaying a provocatively large crystal, flanked by a tracery of sleeping bats. With black ribbon ties. ‡



All pendants are cast and hand-made in fine English pewter, many with additional high quality crystals and other components, hand-plated or other two-tone finish and all come complete upon their nickel-free chain or other necklace of appropriate length.

**P442**  
**Mystical Cube Cross**  
*An intricate box that magically unfolds to reveal a crystal-set cross. ‡*



**P444**  
**Cryptinia**  
*A tier of purple velvet gems cascades from its wings of the night - with 22 crystals. ‡*



**P441**  
**Desolation Cross**  
*The fine tracery of a spider's web now occupies the frame of an empty cross. ‡*



**P440**  
**Baron Calvaria's Arms**  
*A Cross moline surmounted by a quad de crane. ‡*



**P439**  
**Vampretta**



*Crystallised blood drips from the fangs at the throat. - on black ribbon. ‡*

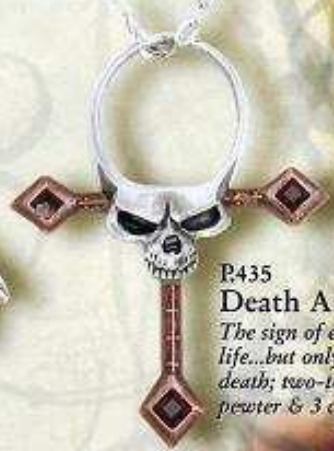


**P438**  
**Draconette**  
*Art Nouveau style, delta winged dragon supporting St. George's Cross. ‡*

**P437** **Pavonia**  
*The elegance and mysteries of a peacock, reflected in both form and colour; with etched stainless steel, articulated feather wings and Swarovski crystals. ‡*



**P436**  
**From The Night**  
*A bat from the 'Fin de Siecle'. ‡*



**P435**  
**Death Ankh**  
*The sign of eternal life...but only after death; two-tone pewter & 3 crystals. ‡*

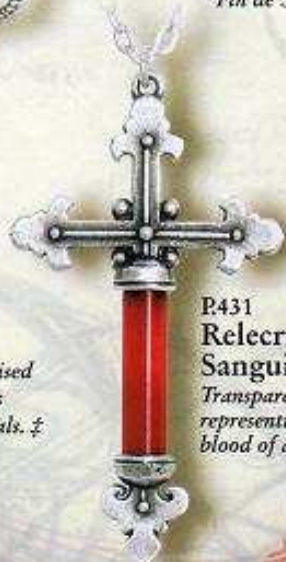


**P434**  
**Furnace of Mercury**  
*The reborn Salamander emerges from the pentagram; Fire of Life; two-tone pewter & crystal. ‡*

**P433**  
**Pendulum of Poe**  
*A victim's crystallised blood drop accents the horror; 5 crystals. ‡*



**P431**  
**Releacruz Sanguis**  
*Transparent stem, representing the blood of a martyr.*



**P430**  
**Twilight Cross**  
*Five crystals represent the transformation from Light to Dark - Life to Death. ‡*



# Pendants

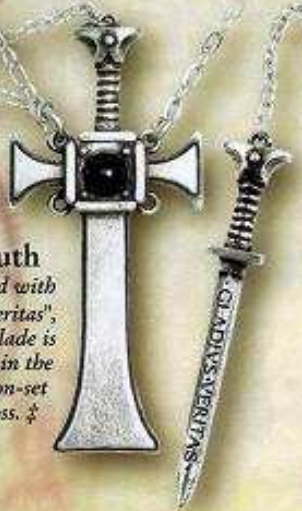
Pendants are approx. 75% of actual size.



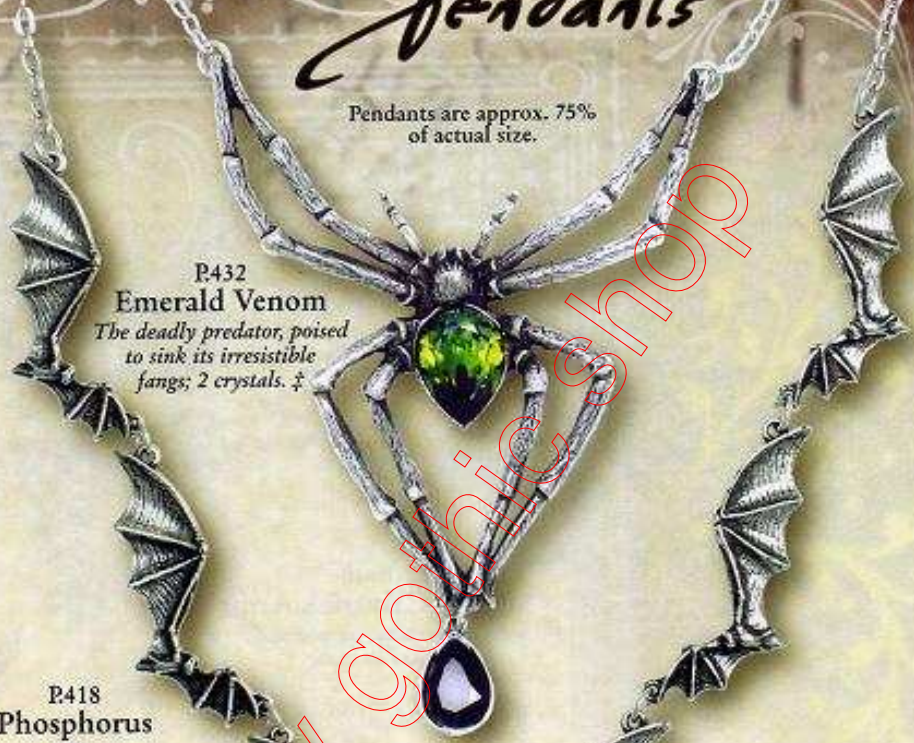
**P425 Headstone**  
The bitter-sweet reality of life is revealed in this spinning, faux-onyx symbol of Summer & Winter - Life & Death.



**P419 Skull & Bones**  
Crystal-set, articulated Reliquae Mortalis. ‡



**P423 Cross of the Sword of Truth**  
Engraved with "Gladius Veritas", the glorious blade is sheathed in the cabochon-set Holy Cross. ‡



**P432 Emerald Venom**  
The deadly predator, poised to sink its irresistible fangs; 2 crystals. ‡



**P418 Phosphorus**  
Venus, the Morning Star & Goddess of Love & Beauty, enamelled & set with 10 crystals. ‡



**P429 Elvira's Tryst**  
The secret rendezvous with the afterlife; articulated bat chain with crystal dropper. ‡



**P412 Destiny**  
The Web of Wyrd; engraved mirror, projecting the dark fate of its wearer. ‡



**P420 Moonrunner**  
Diabolis' messenger on a mission of the night; enamelled.



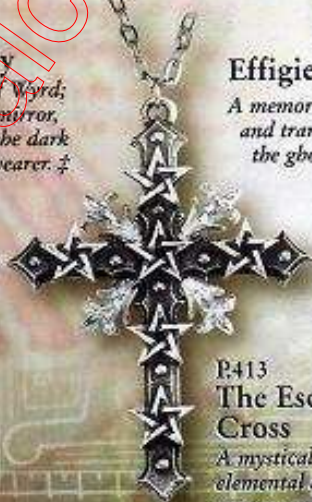
**P416 Effigies Gloria**  
A memorial photo-locket, with brass hinges and transparent window, superimposed with the ghostly image of the afterlife.



**P428 Bouquet Noir**  
A clutch of Black Roses from the Hand of Death. ‡



**P413 The Esotery Cross**  
A mystical cross of elemental alchemical pentagrams.



**P411 Spidraphile**  
Crystal-set arachnids for lovers of grotesque. ‡



All pendants are cast and hand-made in fine English pewter, many with additional high quality crystals and other components, hand-plated or other two-tone finish and all come complete upon their nickel-free chain or other necklace of appropriate length.

P422

**Spirit of Mortality**

*The ephemeral beauty in classic Nouveau style, spirits away the bejewelled essence of humanity; two-tone. ‡*



P427

**Mortifera Cross**

*Cross of Faith, held by the Hands of Fate. ‡*



P426

**Star of Venus**

*The mystical pentagram, beset with faceted crystals, suspended from the symbol of Humanity; 9 crystals. ‡*



P424

**Mortuus Angelicus**

*Funereal harbingers support the magnificently mounted giant jet-black crystal. ‡*



P421

**Carmen**

*Infused with the tragedy of the flirtatious young gypsy scryers; crystal. ‡*



P417

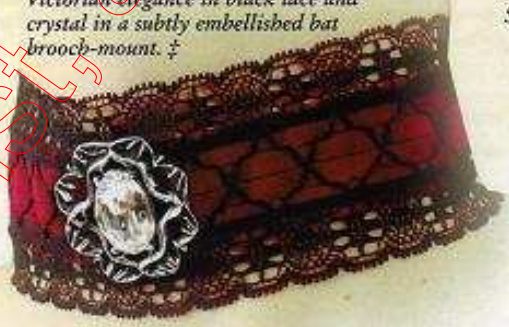
**Draconkreuz**

*Symbol of the obscure, medieval, mystic order and holders of arcane and ancient magical powers. ‡*



P414 Ravana

*Victorian elegance in black lace and crystal in a subtly embellished bat brooch-mount. ‡*



P415

**La Fée Verte**

*The Green Fairy, Art Nouveau Spirit of Absinthe; with crystal accents. ‡*



P409

**Angelicus**

*Crystalline spirit on jewelled, silk cord choker. ‡*



P408

**Catafalque**

*Black ribbon choker of funerary grace. ‡*



P407

**Sacramental Cross**

*C.16th icon of fundamentalist Catholic rites, with glass beads and sanguis enamelled crosslets.*



P416 Coeur Noir

*Graceful, enamelled winged-heart choker on black silk cord.*



‡ Specified crystal colours are subject to availability, and may be substituted.



All pendants are cast and hand-made in fine English pewter, many with additional high-quality crystals and other components, hand-plated or other two-tone finish and all come complete upon their nickel-free chain or other necklace of appropriate length.

‡ Specified crystal colours are subject to availability and may be substituted.

# Pendants

P397

## Illuminati Cross

Rome: The Angels of Bernini steer the sacred path of light through the altars of science. ‡



P406

## Van Helsing

Silver arrow of the vampire hunter.



P404

## Undertaker Choker

Sensual garnishing for a black widow's throat.



And Death shall us divide again

P396

## Lustrati Cross

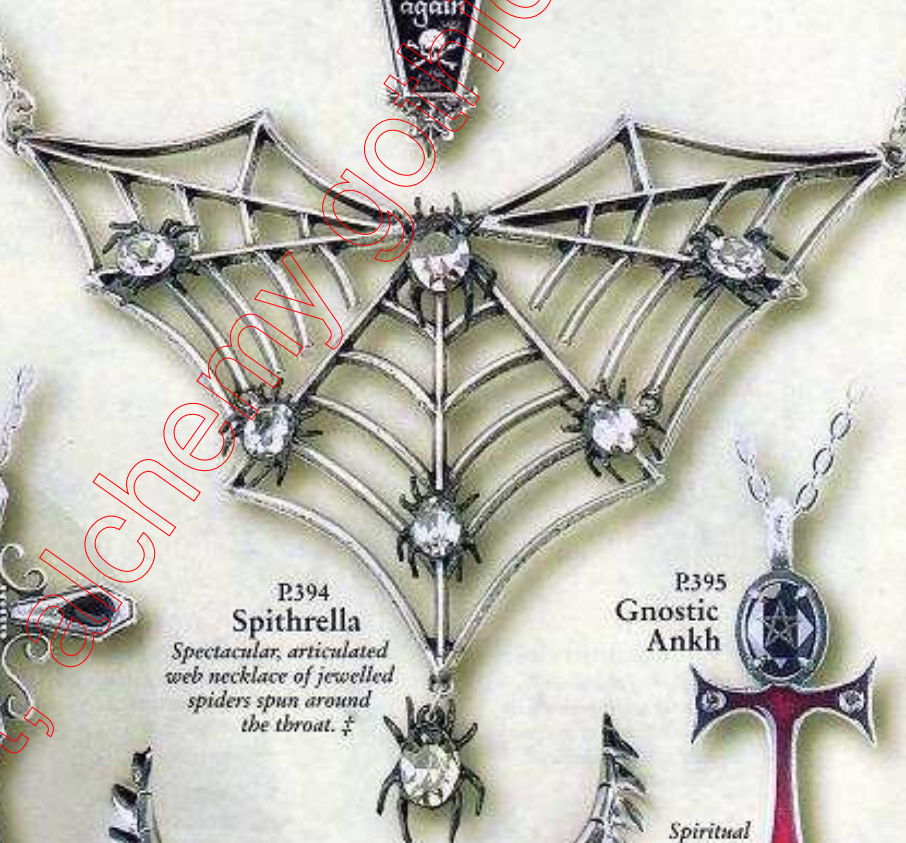
Purification by five sacrifices. ‡



P394

## Spithrella

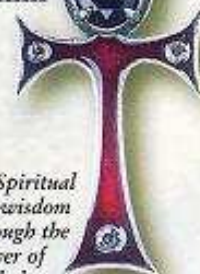
Spectacular, articulated web necklace of jewelled spiders spun around the throat. ‡



P395

## Gnostic Ankh

Spiritual wisdom through the power of knowledge; pentagram-engraved, black crystal atop an enamelled & crystal-set Tau. ‡



P385

## The Eschat Pinn

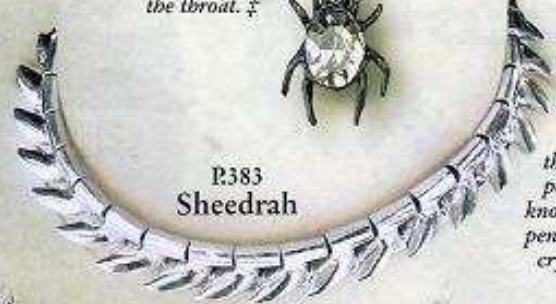
The final nail, or stake, of Death and Judgement. Double-sided with crystal on leather thong. ‡



P383

## Sheedrah

Pewter spine link choker with adjustable fastener. Not to scale.



P373

## Countess Elga

Stylised bat ribbon-choker with suspended gothic burgundy crystal. ‡



P372

## Viesczy

Dual bats supporting a dependant crystal cross. Articulated. ‡



P368

## Vatican Cross

Enamelled popish cross mounting five faceted crystals. ‡



P388

## Croix De Coeur Noir

Cross of the cursed Knight of the Black Heart. ‡



P.400

**Pentaroque**

A fractal pentagram, engraved within the faceted, baroque mounted crystal. £



P.401

**Gladius Ex Ordinis Draconis**

Vlad Dracul's ceremonial, Order of the Dragon sword, set with bloodstone and engraved copper blade. £



P.399

**The Antioch Battle Cross**

Crusading axe-head cross symbol, in two-tone with five crystals. £



P.398

**Vespertria**

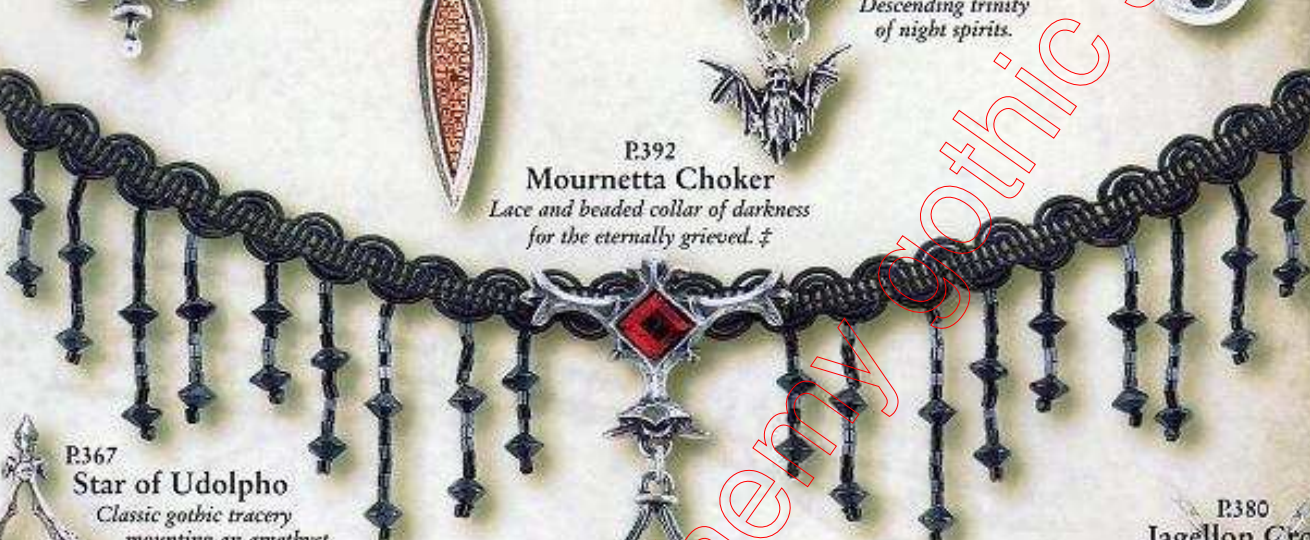
Descending trinity of night spirits. £



P.392

**Mournetta Choker**

Lace and beaded collar of darkness for the eternally grieved. £



P.367

**Star of Udolpho**

Classic gothic tracery mounting an amethyst gem. £



P.403

**Croix Sinestre**

Delicate, Victorian grave-marking cross; with red crystal. £



P.380

**Jagellon Cross**

Spectacular crystal cross of a 17th century Polish queen, with black crystal droppers. £



P.365

**Crystal Pentagram**

Crystal-set, magical star of protection. £



**Eretica**

Vampirish articulated choker set with a single tourmaline - green faceted crystal. £



Not to scale.

P.375

**Muroni**

The Wallachian Vampire which transforms itself into this mortifying spider. In black pewter. £



P.389

**Pentacol Sable**

Tudoresque jewel of Venus and symbol of gnostic mysticism. £



P.359

**Gnostic Cross**

Rosicrucianesque, polished enamel mystic cross with radiating crystal. £



P.355

**Mordred**  
The sword of betrayal in the grip of chaosium; gilt two-tone. £



P.362

**Angel of Doré**

A sombre figure of apocalypse from a tortured mind; bronzed two-tone. £



P.374

**Pentraspect**

Mirrored pentagram with reflective powers. £



Pendants are approx. 75% of actual size.

P349

### Arachnathaea Lace Choker

A giant, wiry spider of polished pewster is sewn onto the throat of this black, pure-cotton lace, with three black crystal droplets. Adjustable with button fastening. £



P354  
**Morticia**

Jet and amethyst crystals drop from the gothic tracery of a spider's midus. £



P352  
**Hemlock Lace Choker**

A sumptuously ostentatious, claw-mounted diamond-crystal gem is sewn to the definitively Victorian black cotton lace, with three black crystal droplets. Adjustable with button fastening. £



P351  
**Stella Igneous**

Magical pentagram consumed by the purifying flames of divinity; bronzed two-tone.



P302  
**Deathlock**

Your life is the handmaiden to mortality.



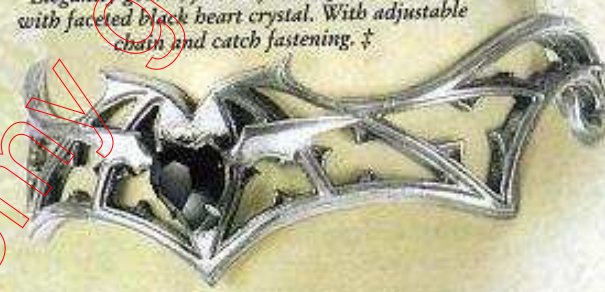
P332  
**Blackheart Choker**

An elegant token for the graceful neck of a femme fatale; crystal black heart pendant on an adjustable black velvet choker. £



P353  
**Mircalla Choker**

Elegantly gothic, femme fatale's pewter collar, with faceted black heart crystal. With adjustable chain and catch fastening. £



P341  
**Orthodox Icon Locket**

Photo locket in the authentic, classic style of an Eastern Orthodox Church icon, with brass hinges and fasteners. To take two, 20 x 30mm size pictures. £



P338  
**Bindrune Hammer**

Authentic style, Scandinavian Thor's Hammer, inscribed with powerful bindrunes to command energy, courage, potency and conquest.



P350  
**The Karnstein Jewel**

A large, black-faceted crystal, borne by the wings of the night predator. £



P299  
**Inquisitor Cross**

The iconic tool of the ruthless Catholic pan-European heresy purge. £



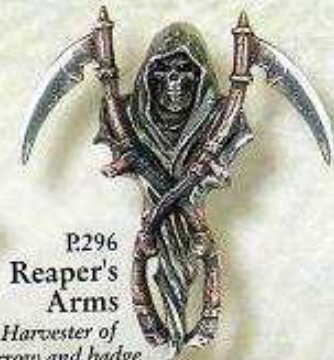
P343  
**Croix de Chartres**

Copper inlaid cross of the gothic exemplar, with black faceted crystal. £



P296  
**Reaper's Arms**

Harvester of sorrow and badge of fate; two-tone pewster.



P275  
**Thor's Skullhammer**

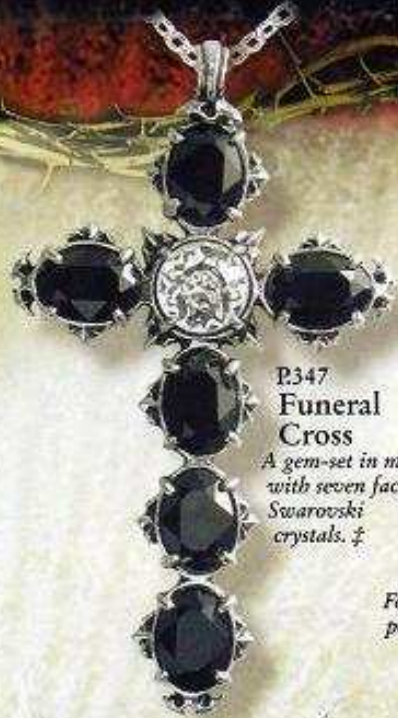
Viking fatalist's power amulet, with bone-resin skull. £



P291  
**Kiss of Death Axe**

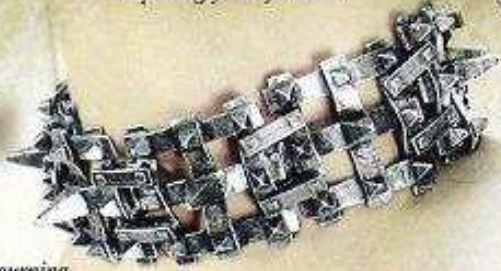
A sensual encounter with a violent death.





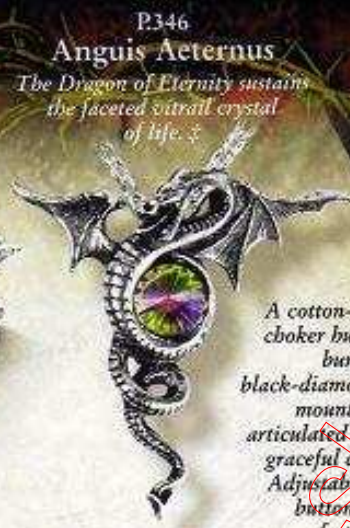
**P347  
Funeral  
Cross**

*A gem-set in mourning  
with seven faceted  
Swarovski  
crystals. ‡*



**P348  
Hell's Grate Choker**

*An articulated, spiked gridiron of medieval  
severity to disturb convention. With  
adjustable length lobster-claw fastening;  
surprisingly comfortable!*



**P346  
Anguis Aeternus**

*The Dragon of Eternity sustains  
the faceted vitrail crystal  
of life. ‡*



**P345  
Dracovina Choker**

*A cotton-velvet  
choker hung with  
burgundy and  
black-diamond crystals,  
mounted in the  
articulated set of a  
graceful dragon.  
Adjustable with  
button / loop  
fastener. ‡*



**P334  
Dragon Heart**

*For the black-hearted, flight of fancy;  
 pewter dragon's wings set with giant  
black heart-shaped crystal. ‡*



**P336  
Dragon Moon**

*A conjunction  
of the mythical  
dragon with the  
feared full moon,  
signifying a reign  
of terror; with  
enamelled  
moon. ‡*



**P331  
Magic Cross**

*An ascendant combination of the  
encircled cross-forme and  
pentagram, incising the wearer  
with positive efficacy; polished  
pewter with brass insert.*



**P325  
Count  
Cagliostro's Cross**

*The celebrated Italian  
Catholic occultist, known as  
'the last of the magicians';  
elaborate, two part, two-tone  
jewel with ten Austrian  
crystals. ‡*



**P333  
Matins  
Cross**

*A delicate,  
openwork cross  
to wear between  
midnight and  
daybreak; set  
with purple  
crystal. ‡*



**P342  
Gothic Ankh**

*A vampiric hybrid of  
the Egyptian symbol  
for eternal life and  
the stylistic form of  
High Gothic. ‡*



**P321  
Abramelin**

*The predominant  
C.15th Kabbalistic  
magi, whose  
angel and demon  
magic  
influenced  
Aleister Crowley. ‡*



**P323  
The Whitby Wyvern**

*The legendary North Yorkshire  
servant of the Antichrist resurges.*



**P256  
Sword  
of Destiny**

*With the Latin  
inscription 'Fortune  
favoured the brave',  
and the power of  
the pentacle.*



**P269  
Draco Mundus**

*The 'World Dragon'  
envelopes the earth's ring  
with its outstretched  
wings; bronze-plated and  
antiqued pewter with three  
red-faceted crystals. ‡*



**P258  
Microcosmic  
Cross**

*The faith of the  
philosopher; with  
bone-resin pentacle.*



**P259  
Mori Choker**

*Mourning  
pendant; with  
mother of pearl  
and black cabochons,  
on adjustable velvet  
choker. ‡*

# Pendants



**P254**  
Ritual Hex

The skull and deep blood-red hologramic enamel, induce an air of occult mystery.



**P252**  
Wolf

The chilling sound of crying at the moon; black pewter with pearlescent white enamel.

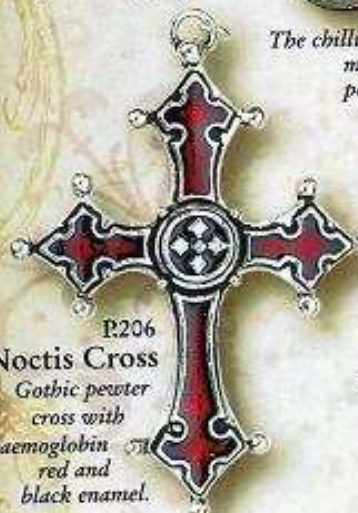


**P235**  
Dante's Hex

Mediaeval style pentagram.



**P246 Requiem Tryptich Coffin**  
Memorial lockets for the dearly beloved. With an inset bronze door-cross, and brass hinged doors revealing a window to take a cut-out photo.



**P206**  
Noctis Cross

Gothic pewter cross with haemoglobin red and black enamel.



**P200**  
Brannon's Axe

Harvester of doom from dark age mythology.



**P199**  
Griffin's Talon

The eagle-lions claws embrace a 16mm topaz crystal ball. £



**P193**  
Black Raven

In two-tone, blackened pewter with polished mount. The Raven, the C.20th symbol of the undead; on 27" ball chain.

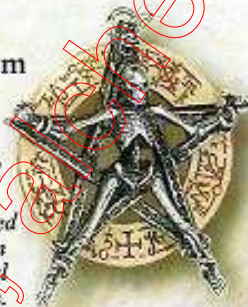
**P183**  
Nosferatu's Rest

Encapsulated in a smoke glazed pewter coffin, the Prince is viewed in his matinal retreat.



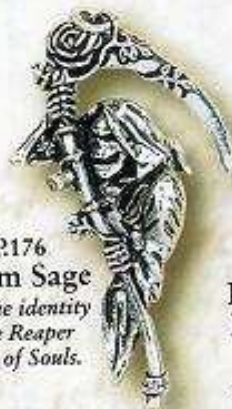
**P180**  
Alcantagram

The Alchemist's symbolic struggle for spiritual supremacy bound by serpent and roses, and encircled by a bone-resin ring of essential sigils.



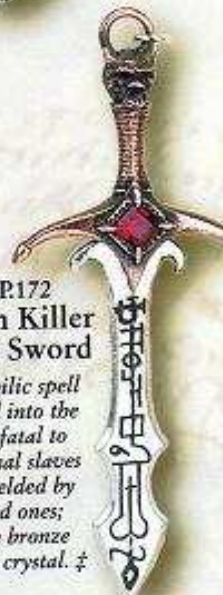
**P176**  
Grim Sage

The true identity of the Reaper of Souls.



**P172**  
Demon Killer Incant Sword

The sigilic spell engraved into the blade is fatal to all infernal slaves when wielded by the gifted ones; two-tone bronze with red crystal. £



**P182**  
Roseus Pentagram

Black enamelled pentagram and dual roses of wisdom.



**P146**  
Chaostar

The compass in which every direction points north from the centre, symbolising the principle and virtue of Chaos.



**P132**  
Celtic Ankh

Celtic style zoomorphic knotwork imparts a Druidic influence to the ancient symbol of life.

**P124**  
Mediaeval Pentacle

In the Middle ages, the most common sign to ward off demonic powers; gilt two-tone with blue cabochon crystal. £



**P121**  
Gothic Bat

Creature of the night in full flight; on split chain.

**P13**  
Dragon's Claw

Scaled dragon holding a smoked topaz 10mm crystal orb. £



**P8**  
Celt's Cross

Early Christianity in classical Celtic carved knotwork.



**VAP10**  
Ring Cross

The cross style is based upon the relics of an Anglo-Saxon Northumbrian saint; with blue enamel and blue crystal.



**VAP2** Mjollnir  
The name of Thor's magical hammer; on split chain.



**P11**  
Double Axe

Barbarian warrior's professional trade.

All pendants are cast and hand-made in fine English pewter, many with additional high quality crystals and other components, hand-plated or other two-tone finish and all come complete upon their nickel-free chain or other necklace of appropriate length.

**P233**  
**Cult of Isis**  
*Translucent red enamelled solar disk, horned and throned, of the great Egyptian and universal Goddess. †*

**P229**  
**Wolverine Moon**  
*We are the full moon and the silver dagger with two moons. †*

**P221**  
**Ankh of the Dead 'Silver'**  
*Vampyre's talisman of eternity incorporating its secret life-blood blade inside the symbolic scabbard; in antique silver-coloured pewter.*

**P214**  
**Batscale Cross**  
*This ornate gothic cross, with purple and black crystals, is on closer inspection, formed of a host of silvery bats. †*

**P190**  
**The Lost Soul**  
*The pitiful tortured remains of a hapless nobody.*

**P188**  
**Anguistrilobe**  
*Working miniature of C.18th instrument to measure the direct path of destiny between specified heavenly bodies; pewter and brass.*

**P186**  
**Darkling Bat**  
*A moderately proportioned vampire bat pendant to aid inconspicuous fraternisation.*

**P148**  
**Pentagram Major**  
*Large, heavy duty double sided endless star of creation; plain interwoven face on one side with bolted frame and skulls on the other.*

**P168**  
**Vesper Cross**  
*A florally illuminated antique post, crossed with the outstretching wings of an evening bat.*

**P159**  
**Vladeptus**  
*Faithful companion to the feared Upire Magistus, and Bohemian creature of deliverance.*

**P158**  
**Vampyr**  
*Vision of the nocturnal nightmare.*

**P109**  
**Equalacorn**  
*Formidable hybrid of unicorn and pegasus.*

**P95**  
**St. Lorenze Kreuz**  
*Gothic tracery inspired by the great cathedral; black crystal. †*

**P64**  
**Blackheart**  
*Sign of the persona noir; black pewter two-tone.*

**P58**  
**Pentagram**  
*Quintessential forces of man.*

**P26**  
**The Alchemist**  
*Classic skull of the philosopher; black rose two-tone.*

# Neckthings

**N100**  
**Leather Thong**  
*A 3ft. long, 2 1/2in square cut leather hide thong in black with pewter length adjusting T-bar fittings and pendant hanger.*

**N.203**  
**Angel Ring**  
*The seven planetary angels are depicted within the enamel, with the reverse side inscribed with their respective names, planets and days.*

**N.191**  
**Wyverex Dragon**  
*The great scaled dragon of justice and power.*

**N.182**  
**Speculum**  
*The Latin inscription reads: "All things change and we with them", the inset mirror revealing the horrifying face of the future.*

Pendants are approx. 75% of actual size