

Items illustrated smaller than actual size.

# Bracelets

Alchemy's bracelets are all hand cast in Fine English Pewter.

Sizes: Bracelets are largely 'One Size, adjustable', covering from Small to Large. However, where fixed sizes are indicated, these are divided into three approximate categories:

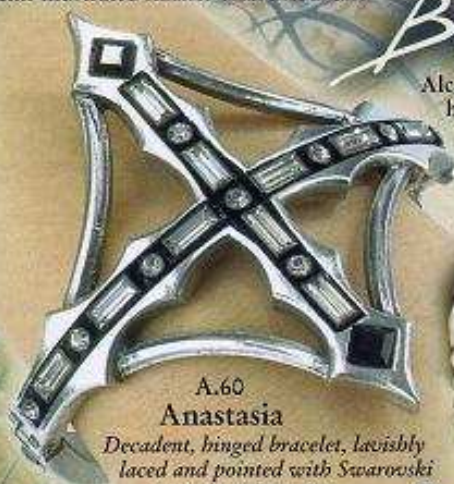
**SMALL** : can be between 6"-7½" (153-191mm) dia ;

**MEDIUM** : can be between 7"-9" (178-229mm) dia ;

**LARGE** : can be between 7½"-9½" (191-242mm) dia.

When supplemented with 'Adj.', a bangle has some degree of adjustment, usually achieved by gently squeezing open or closed to fit.

\* **CAUTION**: Repeated over-bending of bangles will cause metal to fracture.



A.60  
**Anastasia**

Decadent, hinged bracelet, lavishly laced and pointed with Swarovski crystals. ‡ One size.



A.60 Showing hinge detail.

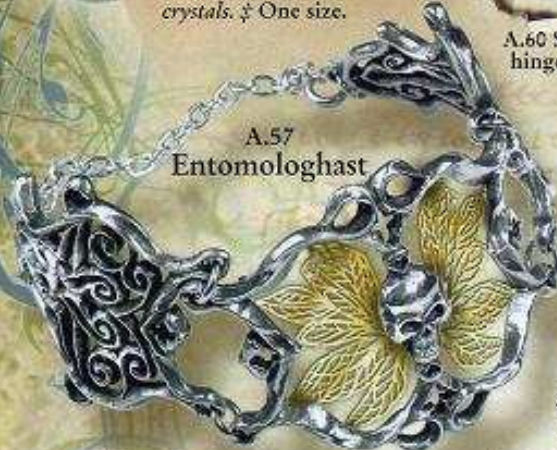


A.58  
Side profile showing 'wing' detail.



A.59  
**The Hampton Oriel Bracelet**

Inspired by a long lost oriel window prayer bay, from the magnificent Hampton Court of the Renaissance; set with stunning 'olive green' enamel and Swarovski crystals and mounted on a black velvet ribbon band. ‡ One size Adj.



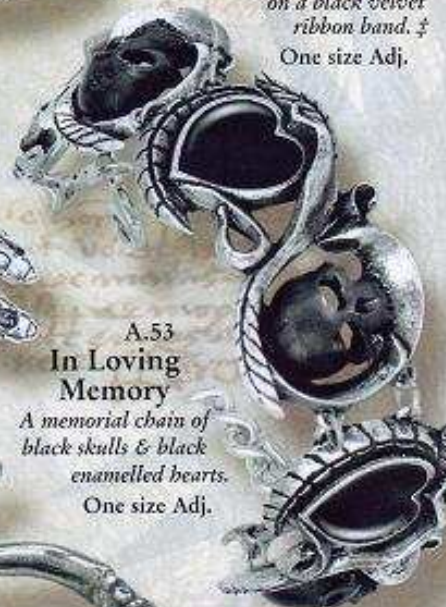
A.57  
**Entomologist**

An ornately articulated, grotesque fantasy of beauty and horror, with the highly intricate, brass, butterfly lace-wings and the body of a skull. One size Adj.



A.58  
**Alchelly**

A bizarre, black cabochon-set gothic-grotesque tribute to Lalique's Art Nouveau dragonfly; the metamorphosis of The Alchemist. ‡ One size Adj.\*



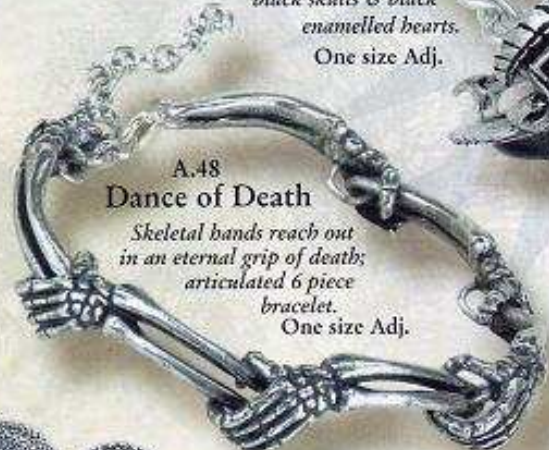
A.53  
**In Loving Memory**

A memorial chain of black skulls & black enamelled hearts. One size Adj.



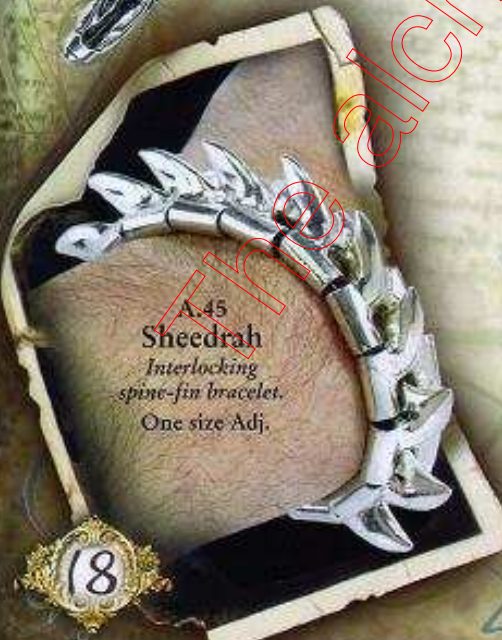
A.49  
**Coeur Noir**

Enamelled black heart with adjustable, fastening cords. One size Adj.



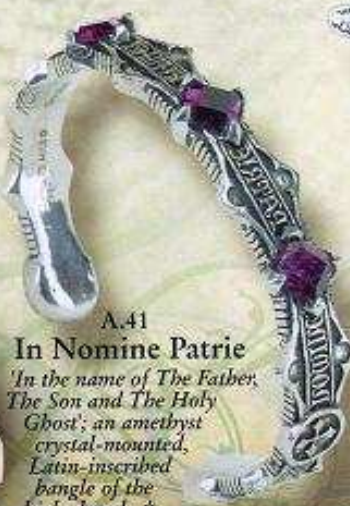
A.48  
**Dance of Death**

Skeletal hands reach out in an eternal grip of death; articulated 6 piece bracelet. One size Adj.



A.45  
**Sheedrah**

Interlocking spine-fin bracelet. One size Adj.



A.41  
**In Nomine Patrie**

'In the name of The Father, The Son and The Holy Ghost'; an amethyst crystal-mounted, Latin-inscribed bangle of the high church. ‡

Size: Medium Adj. \*



A.42  
**Serpentine**

A venomous, articulate chain of interlocking snakes.

Sizes: Small or Large

\* ‡ Specified crystal colours are subject to availability, and may be substituted.

For more information relating to products, symbols, designs etc, see inside front cover.

**A.55 Agrippa's Shadow**  
*A proud cameo of the arcane Alchemist, elegantly suspended by three strings of black pearls.*

One size Adj.



**A.54 Miranda**  
*Elasticated black fishnet, encrusted with a galaxy of Olive crystals, between bat-tipped, pewter bars. ‡*  
One size.



**A.36 Alchemist Gaelic Plait**  
*Comfortable, hand plaited, black leather wristband with an 'Alchemist' pewter button-fastening.*

One size Adj.

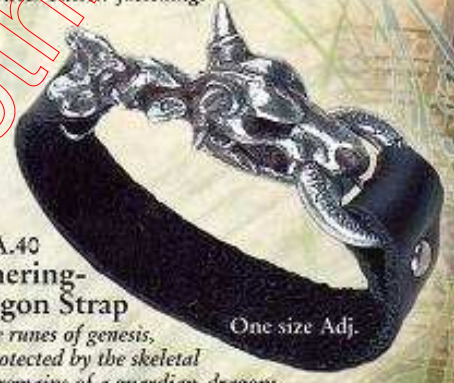


**A.50 Heretic's End**  
*The rack of judgement; two-tone, articulated bracelet.*  
One size Adj.



**A.40 Runerig-Dragon Strap**  
*The runes of genesis, protected by the skeletal remains of a guardian-dragon; on an adjustable, black leather strap.*

One size Adj.



**A.56 Circlet of Venom**  
*An intricate catena of glittering spiders. ‡*  
One size Adj.



**A.51 Skull 'n' Bones Strap**  
*The immortal badge of honour; on an adjustable, black leather strap.*

One size Adj.

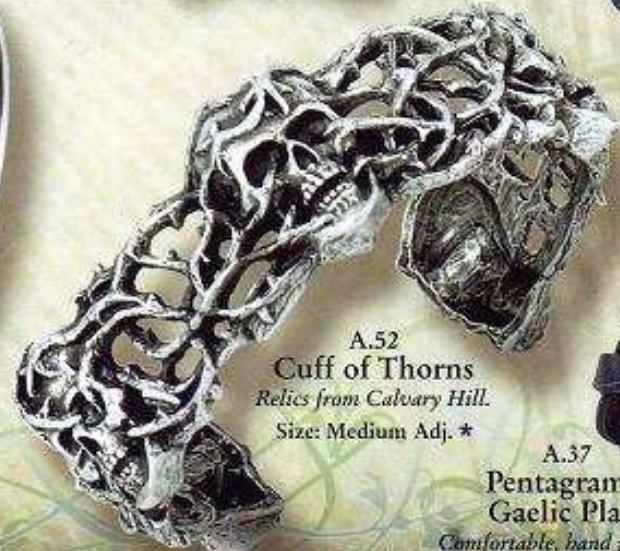


**A.47 Sigillum**



*Brass-binged, pewter shackle-style bracelet mounting polished brass panels, bearing the Enochian planetary sigils for Mars, The Moon and Mercury. One size Adj.*

**A.52 Cuff of Thorns**  
*Relics from Calvary Hill.*  
Size: Medium Adj. \*



**A.46 Vampire Gaelic Plait**  
*Superb quality, hand plaited, black leather wristband with pewter vampire bat button-fastening.*

One size Adj.



**A.37 Pentagram Gaelic Plait**  
*Comfortable, hand plaited, black leather wristband with pewter pentagram button-fastening.*

One size Adj.



19

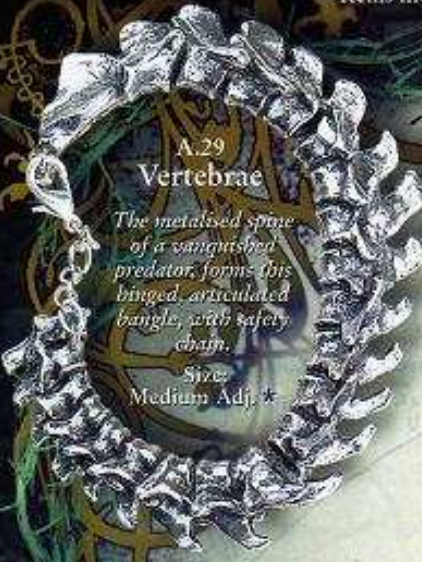
# Bracelets

Alchemy bracelets are all hand cast in Fine English Pewter.

A.29  
**Vertebrae**

The metalised spine of a vanquished predator, forms this binged, articulated bangle, with safety chain.

Size: Medium Adj. \*



A.38  
**Mircalla Bracelet**

Beautiful, bat-form bracelet in hand-polished pewter, for the inimitably manicured gothic Madame, with a faceted black heart crystal and adjustable chain and catch fastening. ‡

Size: Medium Adj. \*



A.25  
**Bat Chain**

A circle of linked gothic bats.

Size: Medium Adj.



A.27  
**Hell's Grate**  
Spiky, articulated gridiron manacle.



Sizes: Small or Large

A.26  
**Requiem Aeternam**

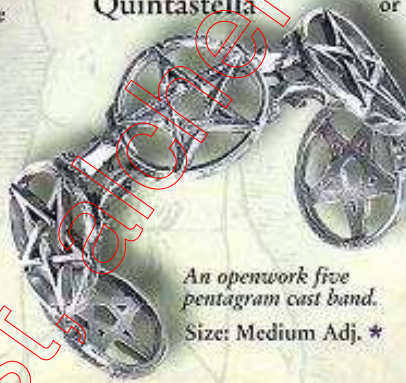
Latin script reads: "Grant them eternal rest O Lord."

(Detail)



Sizes: Small Adj. or Large Adj. \*

A.20  
**Quintastella**



An openwork five pentagram cast band.  
Size: Medium Adj. \*

A.15  
**Spectrostatic Nocturnium**

Early scientific instrumental band for controlling moonlight wavelength emulations; in antiqued pewter and solid brass.

Size: Medium Adj. \*



(Detail)

A.14  
**Ossuary Chain**

Thin head-to-head pewter skull castings, linked by nickel-free curb chain and lobster claws.  
Size: Medium Adj.



A.12  
**Roseus Pentagram**

Cast and varnished bangle featuring black enameled classic pentagrams.

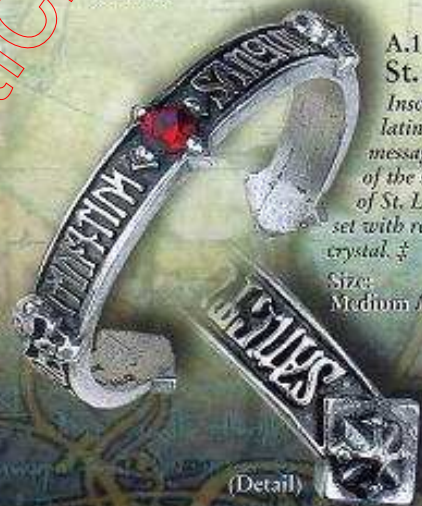
Sizes: Small Adj. or Large Adj. \*



A.10  
**St. Levantius**

Inscribed with the latin and runic message 'The strength of the sacred blood of St. Levantius'; set with red faceted crystal. ‡

Size: Medium Adj. \*



(Detail)

A.17  
**Morum Chain**

Heavy brass adornment of strong cast pewter articulated links and spring bar fastener, centred with a skull of old.

Sizes: Small or Large

